

# BALAJI CHEM SOLUTIONS

YOUR CONCERN, OUR EXPERTISE

Engineering. Surveying. Solutions

BALAJICHEMSOLUTIONS.COM

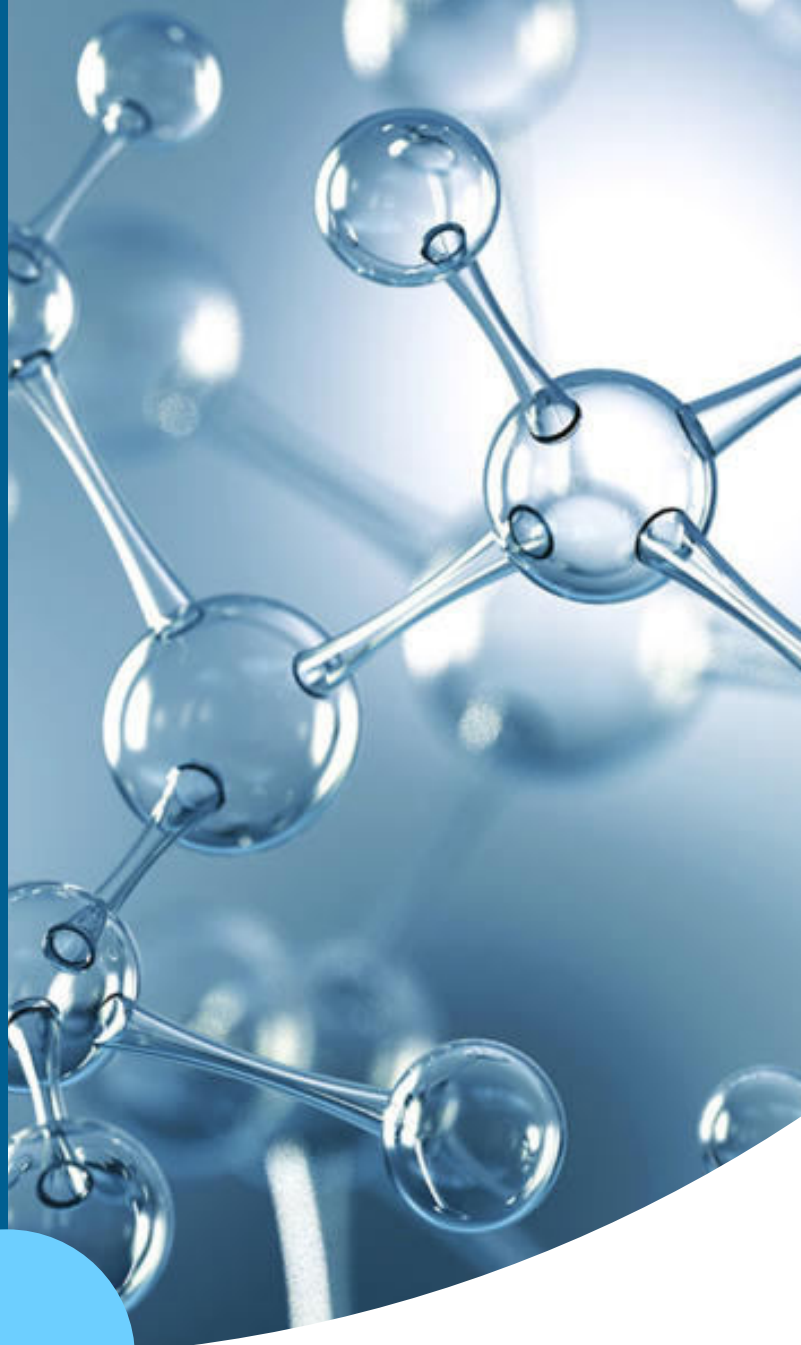
WE OFFER INDUSTRIAL  
SOLUTIONS THAT ARE RELIABLE,  
EFFICIENT, & SAFE



# About us

Balaji Chem solutions started almost two decades ago with a pragmatic vision to offer long-established and experimental solutions to advance a sustainable product in India. Our main aim is to create such an environment with a fusion of chemistry to meet the needs of local industry.

Our product applications are made in such a way that it improves the customer's product quality. Our main focus is on paper, pulp, and water treatment.



## Our Mission

To deliver Green Solutions to Pulp, Paper and Water intensive industries by investing into the latest technology and adopting cost effective methods to produce chemicals that are effective yet eco friendly.

# Our Vision

To develop the Pulp & Paper industry with environment friendly processes and manufacturing of paper & related products by offering quality chemicals cultivated from eco friendly methods and ingredients.

## ESTABLISHING INDUSTRY STANDARDS

The secret of our success is no secret at all. The basic ingredients utilized by us are very well known by everyone which is inclusive of hard work, experience, and intimate knowledge of the market. We are a pioneer in offering qualitative service and functioning; which nowadays, top-notch giants are following.

Our main trust is cultivated through state-of-the-art AKD chemicals plant which has always motivated us to keep a close check on the internal sizing of paper through the quality of wax and AKD emulsion.

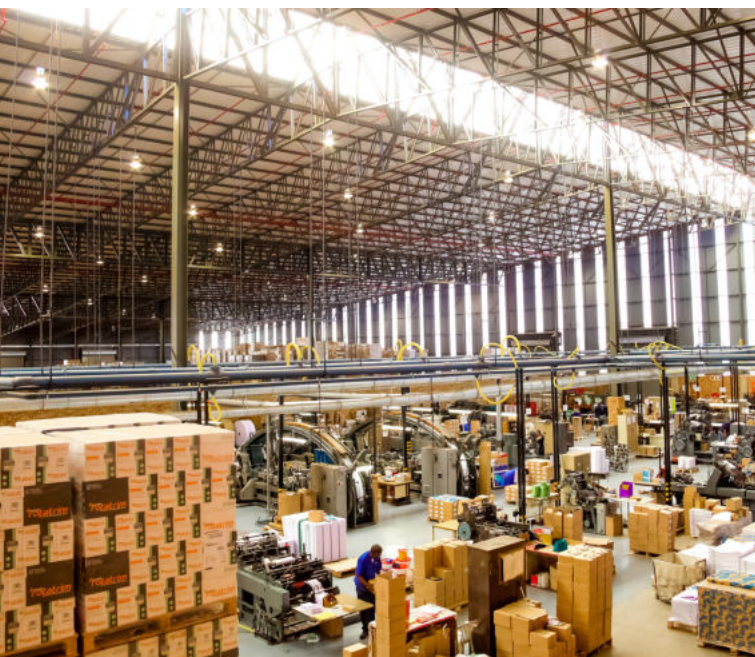


**RELIABLE,  
EFFICIENT, SAFE  
AND SUSTAINABLE.**



# INDUSTRIES

An industry is a group of companies that are related based on their primary business activities. In modern economies, there are dozens of industry classifications. Industry classifications are typically grouped into larger categories called sectors. Individual companies are generally classified into an industry based on their largest sources of revenue. For example, while an automobile manufacturer might have a financing division that contributes 10% to the firm's overall revenues, the company would be classified in the automaker industry by most classification systems.



## PACKAGING & BOARDS

In today's technological world, everywhere food packaging is one of the fast running industries while meeting world-class standards. The material which is used to make these boxes only makes a lot of difference.



## PRINTING & WRITING

Our customized product range provides not only the required quality to paper but can also improve machine productivity and process efficiency.

Our sustainable and expertise in wet end chemistry to support new generation paper producers to encounter the challenges



## RECYCLED FIBER

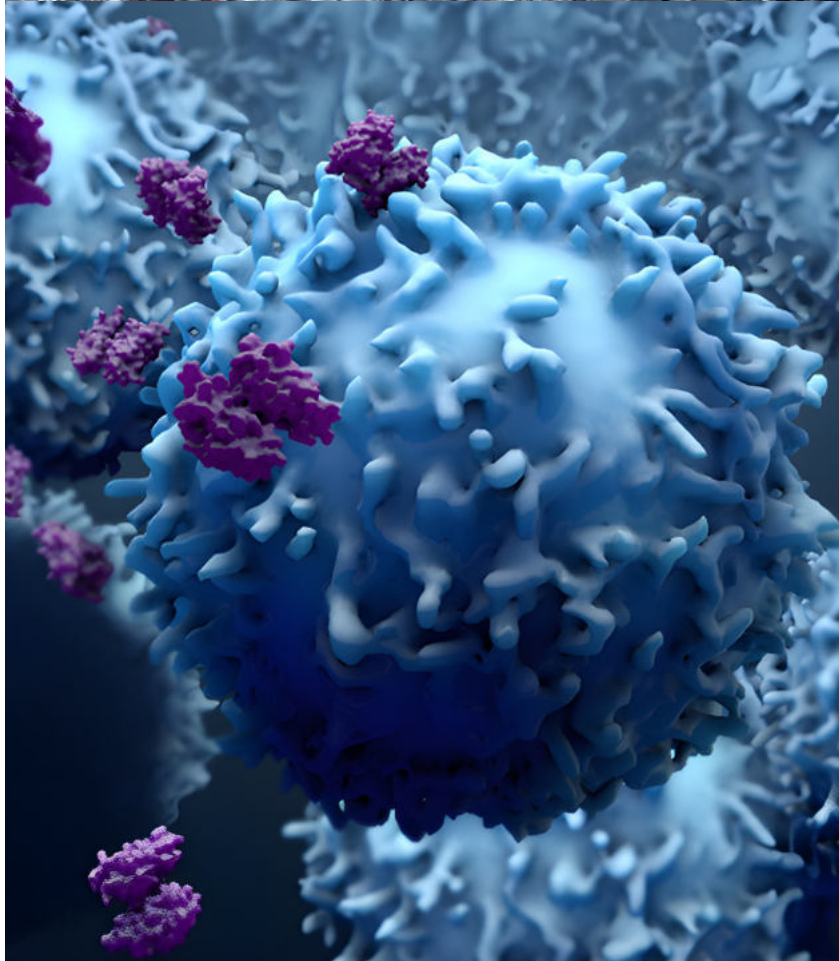
Post-consumer waste is material discarded after consumer use, such as old corrugated containers (OCC), old magazines, books, copies, and newspapers.

Recycled paper is the most important raw material in the pulp and paper industry today. Increasing variability and decreasing fiber quality is the biggest challenges facing producers of recycled pulp today



## ENZYMES

The pulp and paper industry possesses large amount of lignocellulosic biomass every year which helps the environment to be clean and safe. Since 1980s, the use of enzyme in paper and pulp industry is rapidly growing and still some concepts of enzyme are in the process of development. The enzymatic applications for the main processes in pulp and paper industry.







## TISSUE

A tissue has become the gist of our lives. The consumption element has immense softness and touches well at feel as well as strength in its structure. At Balaji Chem solutions, we are helping customers to be hygienic and use it for home needs which can be used anytime and anywhere. Basic and best features of these tissues are: Convenient, Sustainable, User-friendly, Safe to use



## WATER & WASTE WATER TREATMENT

To meet both governmental regulations and industry standards for chemical effluents and pollutants, numerous wastewater chemical solutions have been developed.

Depending on the application, one or more chemical treatments may be necessary to produce up-to-code wastewater.



# APPLICATIONS

To develop the Pulp & Paper industry with environment friendly processes and manufacturing of paper & related products by offering quality chemicals cultivated from eco friendly methods and ingredients.



## INTERNAL SIZING & SURFACE SIZING

The portfolio of surface sizing agent is inclusive of a variety of products that helps in improving the water resistance and oil resistance of food contact papers.

### PRODUCTS

- BANSIZE 2000
  - BANSIZE 1000
  - BANSIZE 3000
  - BANI HMP
  - BANCRAFT
- 

## PAPER MACHINE DEFOAMER AND DE-AERATION

Defoamer are used in paper mills to decrease the production of foam while manufacturing paper.

### PRODUCTS

- BANI DF 1801
- BANI DF BPL HS
- BANI DF 6300
- BANI DF 1700
- BANI DF 1702
- BANI DF 1414
- BANI DFF





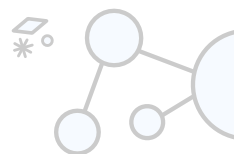


## RETENTION AND DRAINAGE

The R-word called retention aid can impact the papermaking efficiency in three ways-One of these ways is by cutting down on solids losses, an issue that also depends on save-all performance. Another economically important impact of retention-promoting chemicals involves the frequency of downtime for boilouts, both scheduled and unscheduled.

### PRODUCTS

- BANICELL 1000
- BANICELL 533
- BAYFLOC 3400
- BAYFLOC 5400
- BAYFLOC 2000
- BAYFLOC 140
- BAYFLOC 30 L
- BAYCOLL 100
- BAYCOLL 200

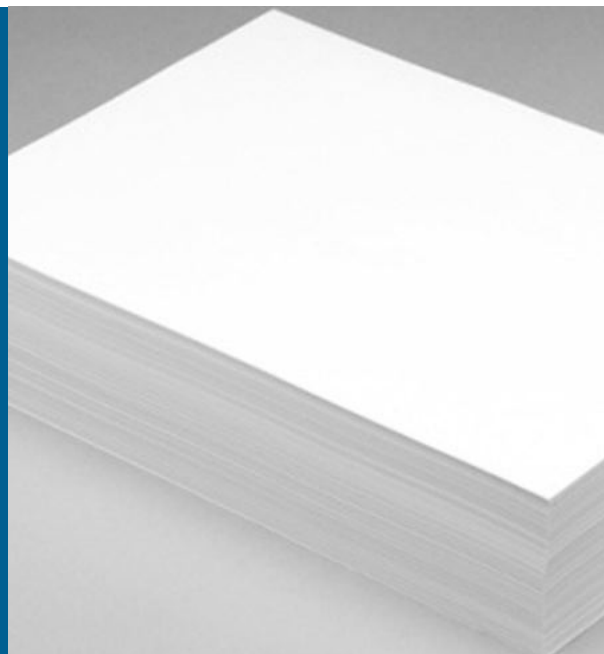


## SURFACE ADDITIVES

Size press additives are present in the paper in full percentage. Mainly, the main aim of adding this material into the paper is to surge the overall strength, reducing dusting tendency, stiffness, and so on.

### PRODUCTS

- BANISTRENGTH
- BANI DISPO
- BANI OXY
- BANI PSI
- BANI SSCR
- BANI PAE



## WET STRENGTH RESIN

Wet Strength Resin products are used in a variety of specialised papers such as paper-posters, labels, wallpapers, etc. that are required to retain a certain level of strength when moisturised.

### PRODUCTS

- BANISTRENGTH 6100
- BANISTRENGTH 6200
- BANISTRENGTH 6033
- BANI REZ 100
- BANI REZ 50



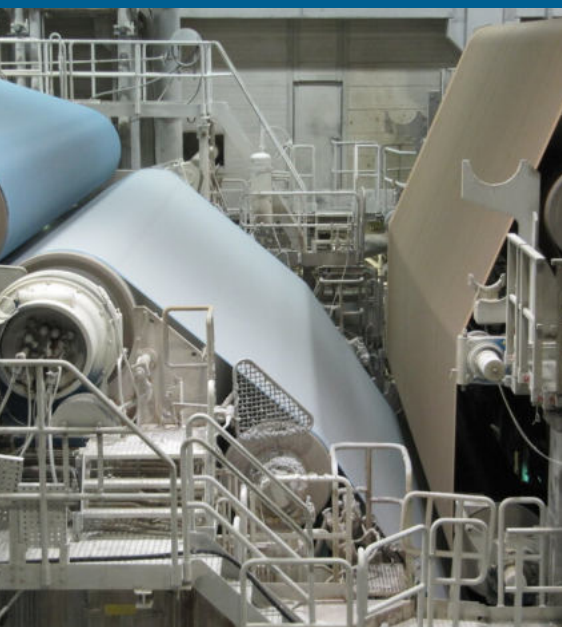
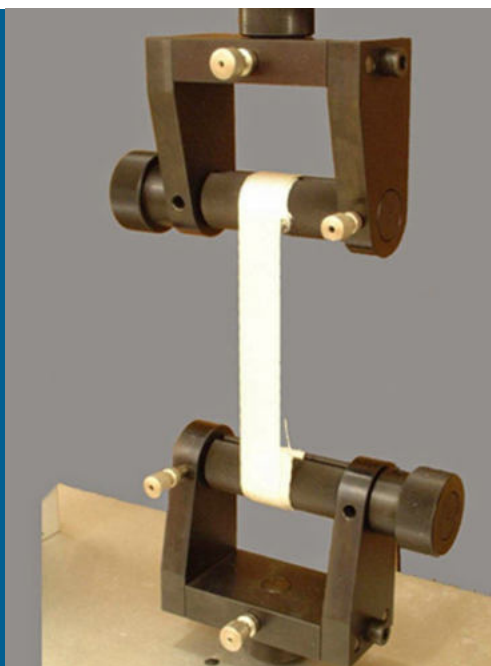


## DRY STRENGTH RESIN

Balaji chem solutions dry strength resin comes in premium quality which adds dry strength to the paper. They are mainly available in three forms that is anonic, cationic, and amphoteric.

### PRODUCTS

- BANISTRENGTH 2041
- BANISTRENGTH 3041
- BANISTRENGTH 3551
- BOUNDINGAID
- BANI CS
- BANI TS



## FELT/WIRE CLEANING AND CONDITIONING PROGRAM

Balaji chem solutions offer customized cleaning and conditioning programs for paper machines. The need for cleaning chemical programs is to improve the mill's profitability & productivity by reducing downtime.

### PRODUCTS

- BANI WC - WIRE CLEANING
- BANI FC - FELT CLEANING
- BANI BW - BATCH WASH
- BANI 12009/12010/12011 - BOIL OUT

## MICROBIOLOGICAL & DEPOSIT CONTROL PROGRAM

A good microbiological control program will extend the time of high operating efficiency and produce a high-grade finished product.

### PRODUCTS

- BANI CHEM IIP
- BANI BIO GB
- BANI 1059
- BANI IVP
- BANI SP





## STICKIES CONTROL PROGRAM

Stickies are a mixture of organic compounds which inculcate due to printing inks coating binders, wet strength resins, and innumerable others.

### PRODUCTS

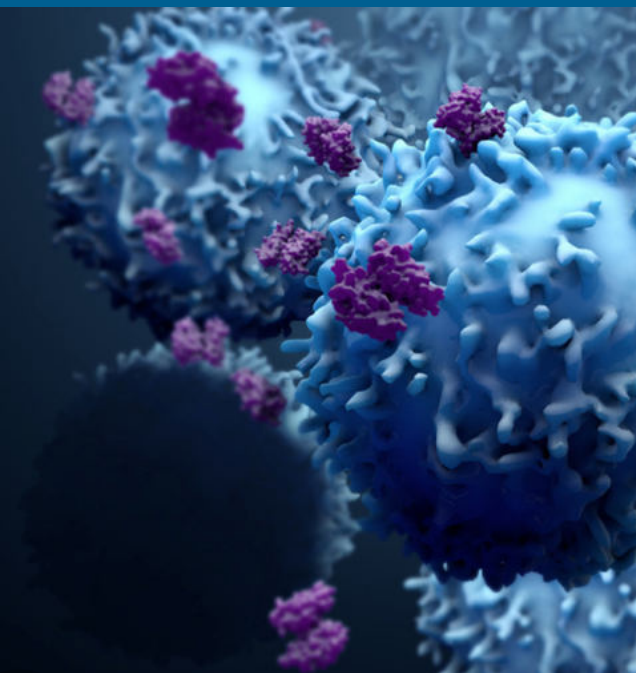
- BANI DISPO
- BANI SC D
- BAYCOLL
- BANI SC

## DEINKING CHEMICALS

Deinking process is very famous process in which machines remove the printing ink from paper fibres from recycled paper to make it deinked pulp.

### PRODUCTS

- BANI DI 9110 PC
- BANIZYME DI
- BANI DI 9110
- BANI DI 1011
- BANI DI 1001
- BANI 810



## ENZYMES

The enzymatic applications for the main processes in pulp and paper industry i.e. deinking, fibrillation, bleaching, defining, starch modification, drainage unprecedented short period of time.

### PRODUCTS

- BANI SL ENZYME
- BANIZYME PR 810
- BANIZYME TFR
- BANIZYME DR
- BANIZYME R
- BANIZYME DI
- BANI ST



## MODIFIED & NATIVE STARCH BLENDS

Balaji chem solutions Modified & Native starch Tapioca, Corn and blends comes in premium quality which provide strength engineering and retention. The unique tailor-made starch blend of Corn Starch, Tapioca starch, fruit starch, and Amph. Powder DSR use to improve the binding properties of final product & also improve the effusiveness of sizes, wet strength and dry strength resins another additives in paper manufacture.

### PRODUCTS

- BANI TS
- BANI TS STD
- BANI MS 910
- BANI TS AMPH.
- BANI TS 40
- BANI OXY
- BANI OXY M



**We are committed to provide safe & best industrial solutions to factories.**



## Know Us

- **26 Years of Experience**  
Serving since a long time with effectiveness in the field
- **51 Awards Achieved**  
Industrial experiences of 21st Century that drives Innovations
- **164 Workers Employed**  
Balaji chem solutions provided lots of employments
- **714 Projects Completed**  
Perfectly delivered project to factories



**Scan this to  
know more**

**WE OFFER INDUSTRIAL  
SOLUTIONS THAT ARE RELIABLE,  
EFFICIENT, & SAFE**

## Head Office

Balaji Chem Solutions PVT LTD,  
Plot No. D-1,2,3, Focal Point,  
Sangrur-148001, Punjab

## Contact Details

 [balajichemsolutions.com](http://balajichemsolutions.com)

 **+91 82 88 000020**

 [info@balajichemsolutions.com](mailto:info@balajichemsolutions.com)

 [@balajichemsolutions](https://www.facebook.com/balajichemsolutions)